

## Evolving strategies for effective Implementation of the un-organised workers social security act 2008

- National Center for Labour (NCL)
- Budget Expenditure for unorganised workers by Labour and employment departments in states
  - 7<sup>th</sup> September, 2011.
  - By
    - Mahender Jethmalani
    - Pathey Budget Center
      - [www.pathey.in](http://www.pathey.in)
  - [mahender68@hotmail.com](mailto:mahender68@hotmail.com)

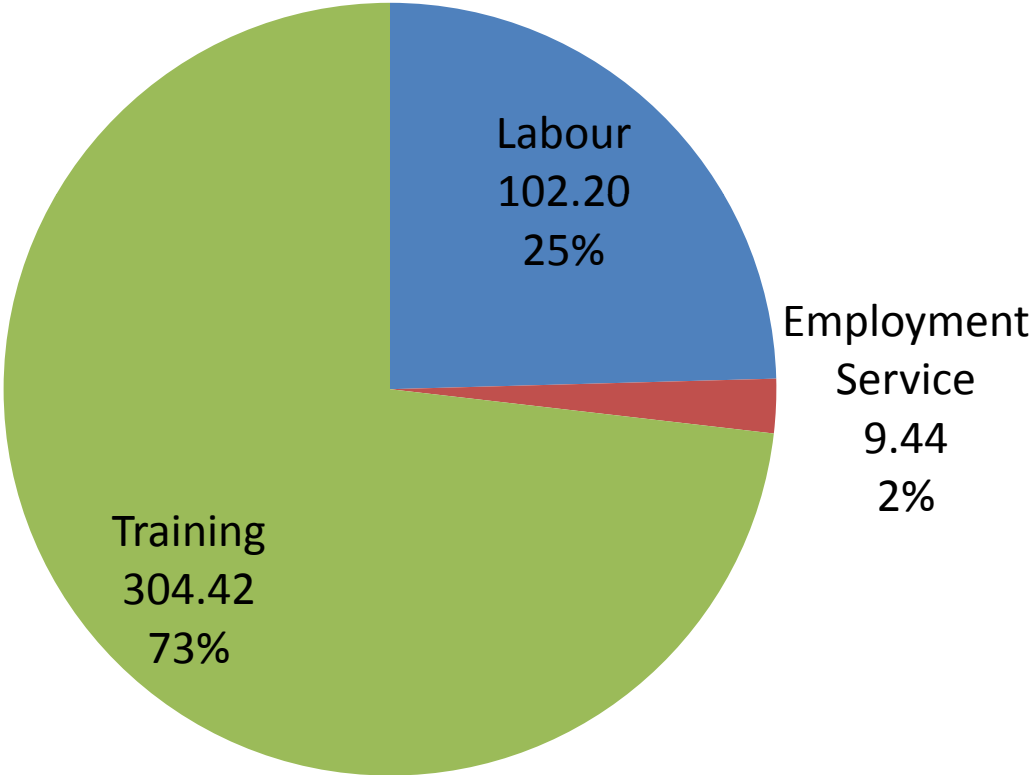
- State's budget
- Karnataka
- Kerala
- Tamil Nadu
- Gujarat
- West Bengal

- KARNATAKA STATE

# Karnataka Labour Dept budget outlay for 2011-12, Rs in Crs

	₹ in crs	₹ in crs	₹ in crs	₹ in crs
<b>Heads of Account</b>	<b>2009-10-ac</b>	<b>2010-11-BE</b>	<b>2010-11-RE</b>	<b>2011-12-BE</b>
<b>Labour</b>	<b>38.34</b>	<b>69.25</b>	<b>70.27</b>	<b>102.20</b>
<b>Employment Service</b>	<b>7.75</b>	<b>8.39</b>	<b>8.67</b>	<b>9.44</b>
<b>Training</b>	<b>226.38</b>	<b>300.32</b>	<b>238.29</b>	<b>304.42</b>
<b>Total</b>	<b>272.48</b>	<b>377.96</b>	<b>317.22</b>	<b>416.06</b>

# Karnataka Labour Dept budget outlay for 2011-12, Rs in Crs



	₹ in crs	₹ in crs	₹ in crs	₹ in crs
Heads of Account	2009-10-Acc	2010-11-BE	2010-11-RE	2011-12-BE
<b>Labour</b>				
<b>Direction and Administration</b>	1.92	2.03	2.03	2.26
<b>Industrial Relations</b>	17.20	20.61	20.61	22.87
<b>Working Conditions and Safety</b>	4.64	5.39	5.43	5.95
<b>General Labour Welfare</b>	4.75	4.28	4.28	6.28
<b>Social Security for Labour</b>	0.00	0.00	0.82	0.00
<b>Assistance to Gram Panchayats</b>	0.00	0.68	0.68	0.68
<b>Labour Studies</b>	0.56	0.25	0.25	1.97
<b>Other</b>	9.26	36.00	36.00	62.20
<b>Total</b>	<b>38.34</b>	<b>69.25</b>	<b>70.11</b>	<b>102.20</b>

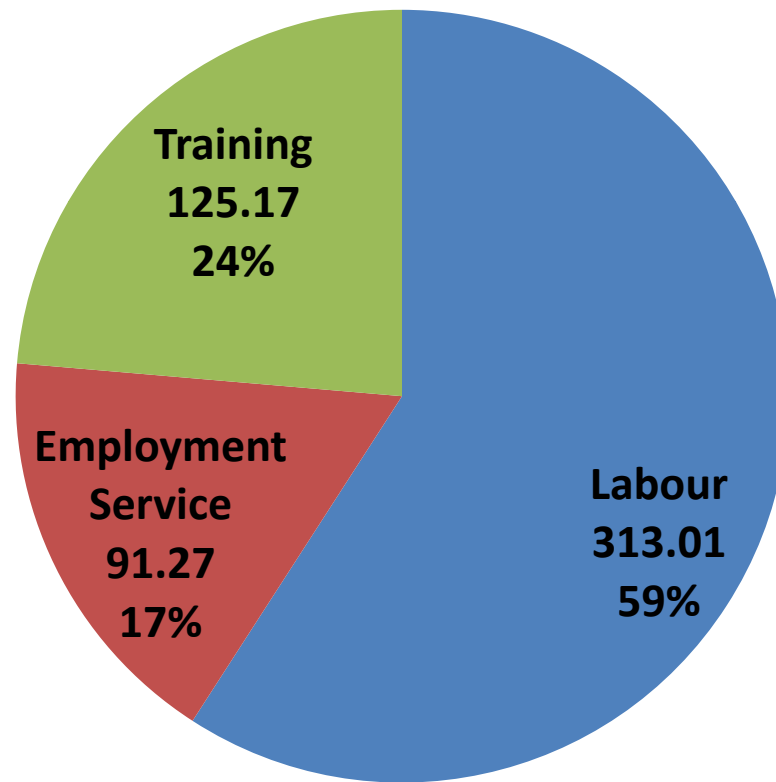
- Kerala State

# Kerala state's Labour Dept budget outlay for 2011-12, Rs in Crs

	₹ in crs	₹ in crs	₹ in crs	₹ in crs
Sub Major and Minor Heads	2009-10- Acc	2010-11 BE	2010-11 RE	2011-12 BE
Labour	161.96	199.24	219.66	313.01
Employment Service	72.2	79.64	79.64	91.27
Training	67.86	87.51	94.1	125.17
<b>Total</b>	<b>302.01</b>	<b>366.38</b>	<b>393.39</b>	<b>529.44</b>



# Kerala state's Labour Dept budget outlay for 2011-12, Rs in Crs



# Kerala state's Labour Dept budget outlay for 2011-12, Rs in Crs

Kerala				
Sub Major and Minor Heads	₹ in crs	₹ in crs	₹ in crs	₹ in crs
	2009-10-Acc	2010-11-BE	2010-11-RE	2011-12-BE
Direction and Administration	11.34	11.51	11.64	15.97
Research and Statistics	0.07	0.11	0.11	0.13
Industrial Relations	3.02	3.34	3.38	4.4
working Conditions and Safety	7.32	8.23	8.27	11.44
General Labour Welfare	23.65	72.05	132.26	281.07
Assistance to Labour Co-Operatives	0	0	0	0
Irrecoverable Loans written off	0	0	0	0
Other Expenditure	22.45	104	64	0
<b>Total</b>	<b>67.85</b>	<b>199.24</b>	<b>219.66</b>	<b>313.01</b>

- **Tamil Nandu**

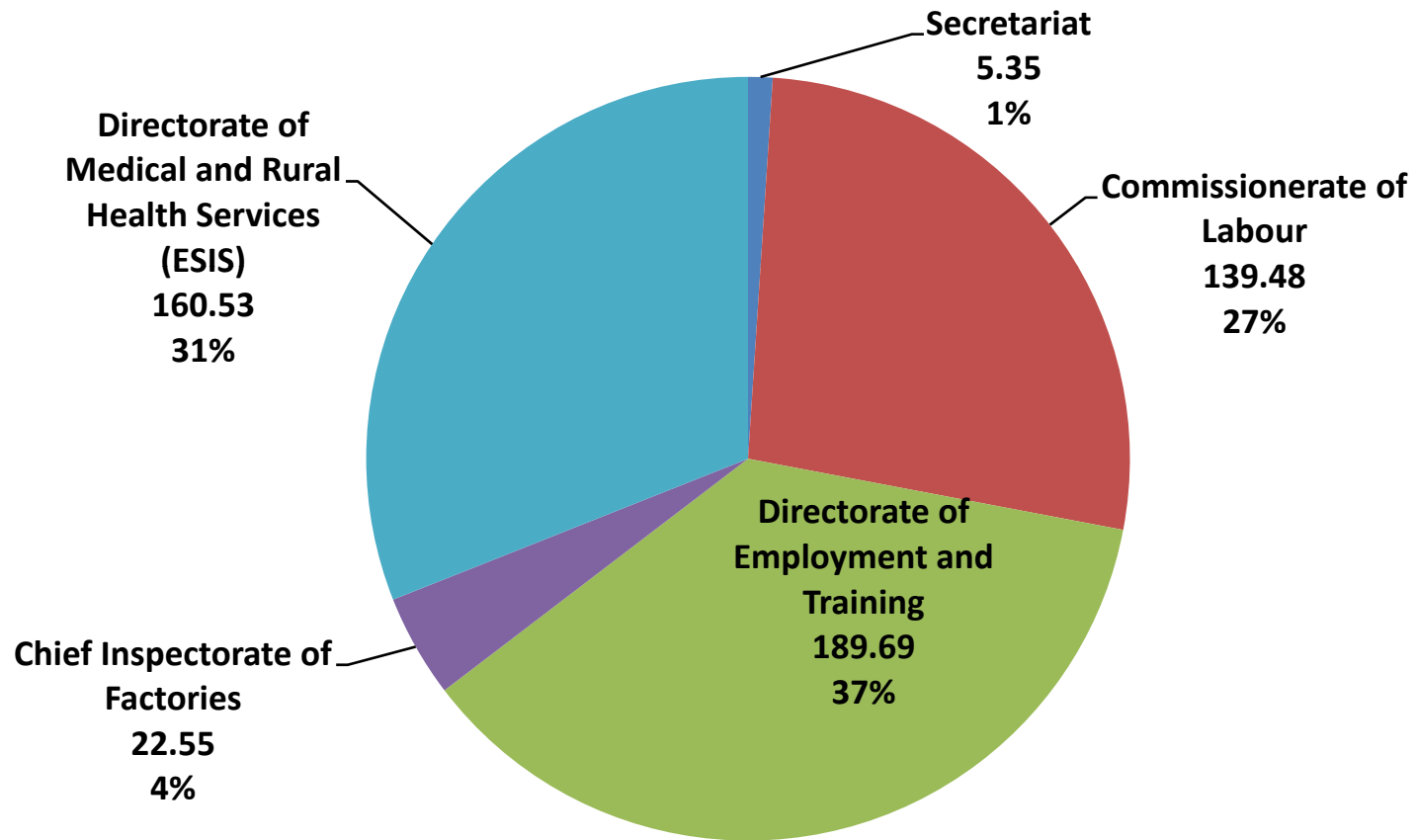
**Tamil Nadu**  
state's Labour Dept budget outlay for 2011-12, Rs in Crs

	2009-10-AE	2010-11-BE	2010-11-RE	2011-12-BE
<b>Heads of Account</b>	₹ in crs	₹ in crs	₹ in crs	₹ in crs
<b>Labour</b>	<b>116.15</b>	<b>147.17</b>	<b>152.16</b>	<b>152.78</b>
<b>Employment</b>				
<b>Service</b>	<b>18.75</b>	<b>26.04</b>	<b>25.8</b>	<b>25.04</b>
<b>Training</b>	<b>79.23</b>	<b>165.3</b>	<b>164.89</b>	<b>115.05</b>
<b>Total</b>	<b>214.13</b>	<b>338.51</b>	<b>342.85</b>	<b>292.87</b>

## Tamil Nadu state's Labour Dept budget outlay for 2011-12, Rs in Crs

Tamilnadu				
Sub Major and Minor Heads	2009-10-Acc	2010-11-RE	2010-12- intrim	2011-12-BE
	₹ in crs	₹ in crs	₹ in crs	₹ in crs
<b>Direction and Administration</b>	5.49	5.43	5.32	5.87
<b>Industrial Relations</b>	27.64	29.06	32.23	32.23
<b>working conditions and safety</b>	16.40	20.66	22.47	22.55
<b>General Labour Welfare</b>	1.39	1.78	1.89	1.89
<b>Beedi workers Welfare</b>	1.21	0.25	0.25	0.25
<b>Social Secutiry for Labour</b>	64.02	61.13	61.13	61.13
<b>Special component Plan for Scheduled Castes</b>	0.00	27.00	27.00	27.00
<b>Tribal Area sub-Plan</b>	0.00	1.88	1.88	1.88
<b>Total</b>	116.15	147.17	152.17	152.79

Tamil Nadu  
state's Labour Dept budget outlay for 2011-12 under demand  
number 32, Rs in Crs



# Tamil Nadu Labour Revenue.

Tamilnadu	₹ in crs	₹ in crs	₹ in crs	₹ in crs
Sub Major and Minor Heads	2009-10	20010-11	2011-12	2011-12
Receipts under labour laws	0.66	0.54	0.54	0.54
102 Fees for Registration of Trade Unions	0.08	0.06	0.06	0.06
103 Gees for Inspection of Steam Boilers	9.96	12.00	12.00	12.00
104 Fees realized under the Factories Act	23.17	25.10	25.32	25.32
800 Other Receipts	4.17	5.27	4.49	4.49
Total 0230	38.02	42.97	42.42	42.42

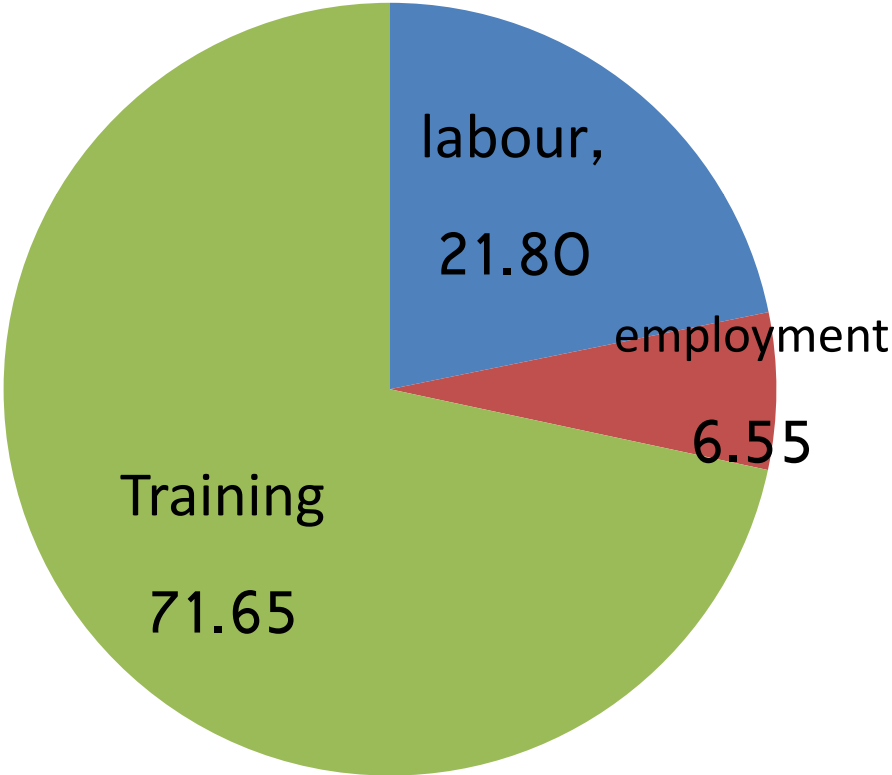
- Gujarat STATE



## Department of Labour and employment's budget in Gujarat state in year 2011-12 BE

	₹ in crs	₹ in crs	₹ in crs	
Sub major head	Plan	non plan	Total	%
Labour	43.54	33.94	77.48	21.80
Employment	10.25	13.04	23.29	6.55
Training	144.54	110.09	254.63	71.65
<b>Total</b>	<b>198.33</b>	<b>157.07</b>	<b>355.40</b>	<b>100.00</b>

**Share of budget allocation for each category under labour department in %  
in year 2011-12**



# Gujarat: Budget Expenditure for Labour

		₹ in crs	₹ in crs	₹ in crs	₹ in crs	₹ in crs
		2007-08 AE	2008-09-AE	2009-10-AE	2010-11-RE	2011-12-BE
	ગોણ સદર	Total	Total	Total	Total	Total
૧	Direction and Admin	3.9021	4.1389	6.5234	8.7858	11.0696
૨	Research and Statistics	0.4912	0.4772	0	0	0
૩	Industrial Relations	4.2027	4.3373	5.8982	6.2900	7.8876
૪	Working conditions and safety	6.3970	7.1857	8.8934	10.5868	16.1748
૫	General labour welfare	6.1762	6.0792	7.6046	9.7927	11.5171
૬	Social security for labour	7.8766	23.1350	10.0607	12.9907	22.6633
૭	Rehabilitation of labourers	0	0	0	0	0.0102
	Other expenditure (GLI, Awards)	2.6300	4.3093	4.1225	7.8734	8.1566
	<b>Total</b>	<b>31.6758</b>	<b>49.6626</b>	<b>43.1028</b>	<b>56.3194</b>	<b>77.4792</b>

**Gujarat state :Receipt unde Major Head 0230 Labour and Employment) as Non Tax Revenue  
NTR**

		2007-08	2008-09	2009-10	2010-11-RE	2011-12-BE
		Actual Income	Actual Income	Actual Income	Revised Estimate	Estimate
	Minor Head	₹ in crs	₹ in crs	₹ in crs	₹ in crs	₹ in crs
१०१	Receipt under Labour laws	4.8780	2.0567	3.1234	5.40	5.832
१०२	Fess for registration of trade union	0.1597	0.8077	0.2467	0.2700	0.2915
१०३	Fees for inspection of steam boiler	3.8159	5.1831	5.5045	5.94	6.4155
१०४	Fees realized under factories act	8.3856	7.6939	8.2113	20.2500	21.8700
१०५	Examination fees under Mines acts	0.3328	0.0755	0.0581	0.3560	0.3845
१०६	Fee under contract labour( Regulation and Abolition rules	65.6604	104.1517	132.3065	76.0860	82.1740
	<b>Sub total</b>	<b>83.23</b>	<b>119.97</b>	<b>149.45</b>	<b>108.302</b>	<b>116.97</b>
१०७	Other receipt Fees from Craftsman Training schemes Sale of periodical and others	9.0009	23.8341	12.8282	51.6550	55.7865
	<b>Grand Total</b>	<b>92.2333</b>	<b>143.8027</b>	<b>162.2787</b>	<b>159.9570</b>	<b>172.7540</b>

- **WEST BENGAL**

# West Bengal state's Labour Department's budget

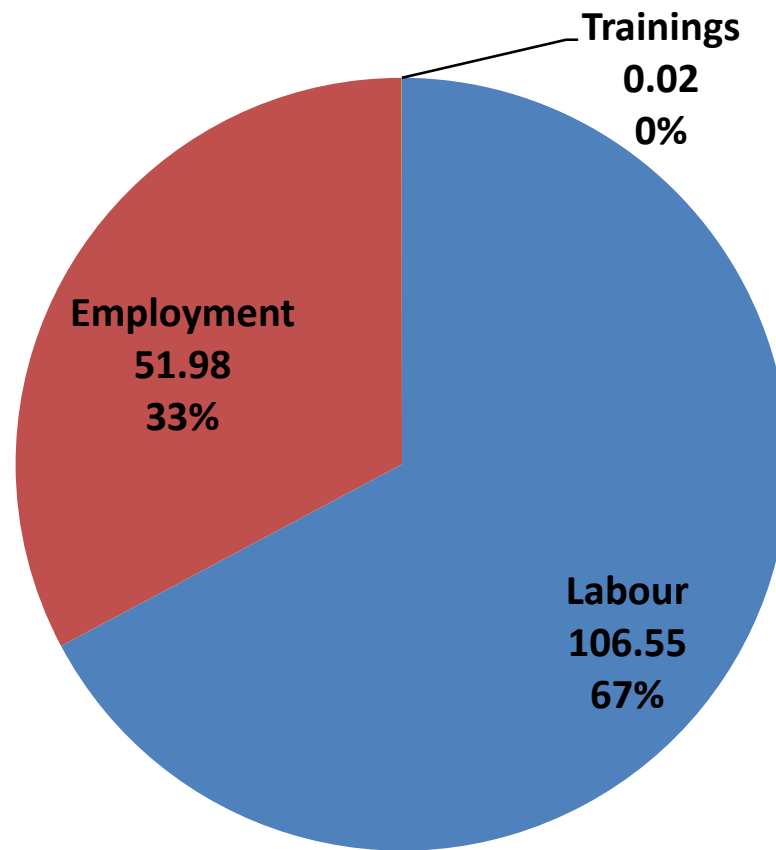
	₹ in crs	₹ in crs	₹ in crs	₹ in crs
West Bengal	2009-10 Actual	2010-11 BE	2010-11 RE	2011-12 BE
Labour	73.58	98.59	85.75	106.55
Employment	32.99	49.68	49.37	51.98
Trainings	0.02	0.02	0.02	0.02
Total	106.59	148.29	135.14	158.55

# Budget outlay under Labour

West Bengal	₹ in crs	₹ in crs	₹ in crs	₹ in crs
	2009-10	2010-11-BE	2010-11-RE	2011-12-BE
Direction and Administration	23.3	26.3	27.3	32.4
Research and Statistics	1.9	2.1	2.1	2.4
Industrial Relations	33.5	42.2	36.7	44.4
Working Conditions and Safety	8.8	10.0	10.4	11.6
General Labour Welfare	1.4	1.8	1.8	2.1
Bidi Workers Welfare	0.0	0.7	0.0	0.0
Rehabilitation of Bonded Labours	0.1	0.1	0.1	0.2
Special Component Plan for Scheduled Castes	4.5	15.0	7.0	13.0
Other Expenditure	0.1	0.3	0.3	0.3
	73.6	98.5	85.7	106.5

# Labour and Labour welfare in West Bengal

Rs. In Crs





- Andhara Pradesh

# AP Labour and Employment expe

	₹ in crs	₹ in crs	₹ in crs	₹ in crs
	2009-10	2010-11-BE	2010-11-RE	2011-12-BE
Non-plan Expenditure	214.81	267.71	288.71	341.93
Plan Expenditure	72.61	167.76	149.92	147.76
Total expenditure	287.42	435.47	438.63	489.69

# AP Non-Plan Expenditure for Labour and employment

	₹ in crs	₹ in crs	₹ in crs	₹ in crs
<b>Andhra-Pradesh</b>	<b>2009-10</b>	<b>2010-11-BE</b>	<b>2010-11-RE</b>	<b>2011-12-BE</b>
Labour secretariat	1.66	1.87	2.08	2.51
Labour protection	42.64	56.22	61.47	71.28
ESIC	100.73	115.68	122.07	145.76
Employment	14.85	20.80	20.91	24.44
Trainings	54.93	73.14	82.18	97.94
<b>Total</b>	<b>214.81</b>	<b>267.71</b>	<b>288.71</b>	<b>341.93</b>

**LABOUR AND EMPLOYMENT BUDGET OUTLAY IN 20011-12 (Rs in Crores)**

	Karnataka	Kerala	Tamilnandu	Gujarat	West Bengal	AP
<b>Labour</b>	<b>102.2</b>	<b>313.01</b>	<b>152.78</b>	<b>77.48</b>	<b>106.55</b>	<b>73.99</b>
<b>Employment</b>	<b>9.44</b>	<b>91.27</b>	<b>25.04</b>	<b>23.29</b>	<b>51.98</b>	<b>24.44</b>
<b>Training</b>	<b>304.42</b>	<b>125.17</b>	<b>115.05</b>	<b>254.63</b>	<b>0.02</b>	<b>97.94</b>
<b>Total</b>	<b>416.06</b>	<b>529.44</b>	<b>292.87</b>	<b>355.4</b>	<b>158.55</b>	<b>196.37</b>

- **Thanks**



# Karnataka

Heads of Account	2008-09-Ac	2010-BE	2009-10-RE	2010-11-BE
	₹ in crs	₹ in crs	₹ in crs	₹ in crs
Labour				
Direction and Administration	1.72	1.83	1.83	2.03
Industrial Relations	15.44	16.75	16.25	20.61
Working Conditions and Safety	4.37	4.69	4.69	5.39
General Labour Welfare	7.38	4.75	4.75	4.28
Assistance to Gram Panchayats	0.01	0.92	0.92	0.68
Labour Studies	0.66	0.56	0.56	0.25
Other	0.00	27.04	15.79	36.00
<b>Total-1</b>	<b>29.68</b>	<b>56.53</b>	<b>44.78</b>	<b>69.25</b>